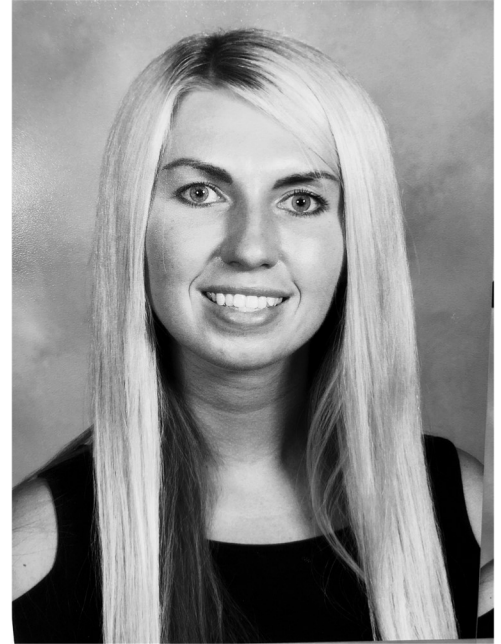
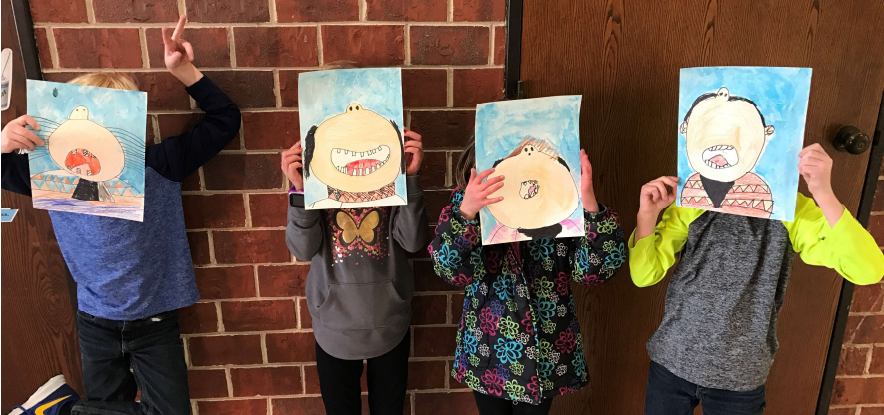


## NOW HIRING: WIS SITE SUPERVISOR

## VIKING DISCOVERY PROGRAM



The Viking Discovery Program is currently hiring a Site Supervisor to care for children ages 5 to 12 in their before/after school and summer program at Waverly Intermediate School (WIS) in Waverly, NE. The Program is licensed with the Department of Health and Human Services; applicants must meet DHHS requirements. CPR, First Aid and DHHS training will be provided.

The Viking Discovery Program offers care and enrichment opportunities at all 3 elementary sites in School District 145. The WIS Site Supervisor oversees and manages day-to-day operations at Waverly Intermediate School. A successful candidate must be able to work with families, children, staff and school district representatives, and be able to maintain compliance with Foundation and DHHS licensing requirements. The Site Supervisor will report to and work with the Viking Discovery Program Director.

This position requires access to a reliable cell phone. Applicants must be a minimum of 19 years of age, enjoy working with kids, be self-motivated and possess great organizational and communication skills. This position requires approximately 20 hours per week during the school-year, and more during the summer months. Compensation will be based on experience and qualifications.

Are your children elementary school-aged? Bring them with you for free while you work!



### Contact Information

Interested candidates should fill out the online application and directly contact Viking Discovery Program Director:

Jen Shakespeare  
E: [programdirector@dist145ffe.org](mailto:programdirector@dist145ffe.org)  
C: 402-484-1122

Employment application link:

<http://dist145ffe.org/viking-discovery-program/employment.html>

The official job description and specific credential requirements can be obtained by contacting Jen. A cover letter and resume can be submitted electronically via the e-mail address above.